

The four earlier newsletters are re-printed here to re-establish the fact that it is well known that the LERA Chess Club sponsors four annual Week-end tournaments each year; that these tournaments occur in March, the Memorial Day weekend, in September, and on the Thanksgiving Day weekend; that we have been sponsoring these tournaments on these dates for the last twelve years (some longer than that); and that we plan to continue sponsoring these tournaments on these dates for many more years to come. Everyone knows that these are our dates and if another organizer were to hold a local tournament on one of these dates, then he would be doing something that he should not be doing, as he would be conflicting with an annual traditional tournament of long standing. This is the position taken by both the U.S. Chess Federation and the Northern California Chess Federation. We hope that it is also your position and that you will support our upcoming Memorial Day tournament (etc.) and that you will not support a conflicting tournament.

We will be awarding a brilliancy prize for the best game in each division of our upcoming Memorial Day Tournament May 28, 29, & 30, 1983.

*Ken Stone Jim Hurt*  
Ken Stone & Jim Hurt  
President & Secty/Treas.  
LERA Chess Club

LERA CHESS CLUB NEWSLETTER

March 3, 1983

The LERA Chess Club sponsors four annual week-end tournaments each year. We endeavor to present top-flight directing and high cash prizes combined with pleasant playing conditions and a diversified snack bar. Our first tournament (2-day) is in March; our second tournament (3-day) is on the Memorial Day weekend; our third tournament (2-day) is in late September; and our fourth tournament (3-day) is on the Thanksgiving weekend.

We have been sponsoring these four tournaments for the last fifteen years. We plan to continue sponsoring these four tournaments on these dates for many more years. We support the U. S. Chess Federation and the Northern California Chess Federation (CalChess) by requiring membership in these organizations. It is not our policy to make a profit on these tournaments, nor can we afford to take a loss as Lockheed does not assist us financially.

The schedule for our four 1983 tournaments is as follows:  
Eighteenth Annual LERA Peninsula Class, March 19 and 20, 1983  
Twelfth Annual LERA Memorial Day Class, May 28, 29, & 30, 1983  
Seventeenth Annual LERA Sunnyvale Class, September 24 & 25, 1983  
Seventeenth Annual LERA Thanksgiving Class, November 25, 26, & 27, 1983.

We appreciate your great support of our fine tournaments.

*Ken Stone Jim Hurt*  
Ken Stone & Jim Hurt  
President & Secty/Treas.  
LERA Chess Club



The LERA Chess Club sponsors four annual week-end tournaments each year. We endeavor to present top-flight directing and high cash prizes combined with pleasant playing conditions and a diversified snack bar. Our first tournament (2-day) is in March; our second tournament (3-day) is on the Memorial Day weekend. (This year we yielded this date to the U. S. Chess Federation for their Amateur Open); our third tournament (2-day) is in late September; and our fourth tournament (3-day) is on the Thanksgiving weekend. We have been sponsoring these four annual tournaments for the last fourteen years. We plan to continue sponsoring these four tournaments on these dates for many more years.

CalChess Circuit Awards

Winners of the CalChess Circuit will be awarded their class prizes at the 1982 LERA Thanksgiving Tournament right after the third round at 1:30 p.m. on Saturday, Nov. 27th in the LERA main auditorium. The prizes occur in six categories: Expert, A, B, C, D, and E. A first prize of \$175, a second prize of \$75, and a third prize of \$50 will be awarded in each category for a total prize fund of \$1800. The first 50 attendees will receive free servings of potato salad, cake, and hot spiced cider!

LERA CHESS CLUB NEWSLETTER

Sept. 10, 1982

The LERA Chess Club sponsors four annual week-end tournaments each year. We endeavor to present top-flight directing and high cash prizes combined with pleasant playing conditions and a diversified snack bar. Our first tournament (2-day) is in March; our second tournament (3-day) is on the Memorial Day weekend (This year we yielded this date to the U. S. Chess Federation for their Amateur Open); our third tournament (2-day) is in late September; and our fourth tournament (3-day) is on the Thanksgiving weekend.

We have been sponsoring these four tournaments for the last fourteen years. We plan to continue sponsoring these four tournaments on these dates for many more years. We support the U. S. Chess Federation and the Northern California Chess Federation (CalChess) by requiring membership in these organizations. It is not our policy to make a profit on these tournaments, nor can we afford to take a loss as Lockheed does not assist us financially.

Our prize fund is based on a realistic estimate of attending players. For example:

LERA CHESS CLUB NEWSLETTER

JUNE 14, 1982

The LERA Chess Club sponsors four annual week-end tournaments each year. We endeavor to present top-flight directing and high cash prizes combined with pleasant playing conditions and a diversified snack bar. Our first tournament (2-day) is in March; our second tournament (3-day) is on the Memorial Day weekend (This year we yielded this date to the U. S. Chess Federation for their Amateur Open); our third tournament (2-day) is in late September; and our fourth tournament (3-day) is on the Thanksgiving weekend.

We have been sponsoring these four tournaments for the last fourteen years. We plan to continue sponsoring these four tournaments on these dates for many more years. We support the U. S. Chess Federation and the Northern California Chess Federation (CalChess) by requiring membership in these organizations. It is not our policy to make a profit on these tournaments, nor can we afford to take a loss as Lockheed does not assist us financially.

We appreciate your great support of our fine tournaments.

*Ken Stone, Jim Hurt*  
Ken Stone & Jim Hurt  
President & Secy/Treas.





# TWELFTH ANNUAL 1983 LERA MEMORIAL DAY CLASS CHAMPIONSHIPS



**DATE** Saturday, Sunday, and Monday, May 28, 29, and 30.

**PLACE** LERA Auditorium, corner of Mathilda Ave. & Java St., Sunnyvale (take Bayshore Freeway to the North Mathilda offramp; then go seven blocks north on Mathilda to Java St.).

**DIRECTOR** Jim Hurt of Saratoga assisted by Ted Yudacufski of Monterey.

**TYPE** Six-round Swiss with five separate divisions, each division with its own prizes.

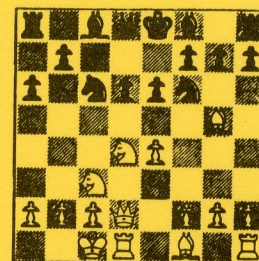
PRIZES	Division	Open	A	B	C	D / E / Unrated
	First Prize	\$600	\$400	\$300	\$150	\$120
	Second Prize	\$300	\$200	\$150	\$ 90	\$ 60
	Third Prize	\$150	\$ 90	\$ 90	\$ 60	\$ 40
	Fourth Prize	\$300	\$ 50	\$ 50		
	No. of Players**	46	31		22	20



\*Best Expert prize; to be eligible, you cannot claim any other prize, and top three must be masters.

\*\*If the entries in a division exceed this number, the cash prize in that division will be increased; and if the entries in a division is less than this number, the cash prizes in that division will be reduced. Come out and support your division.

SCHEDULE	ITEM	STARTING TIME	TIME CONTROL
	Registration	8 to 9 AM Saturday	
	Round One	10:00 AM Saturday	45 moves in 2 hours;
	Round Two	3:00 PM Saturday	15 moves in 30
	Round Three	9:00 AM Sunday	minutes, then
	Round Four	2:00 PM Sunday	10 moves in 10
	Round Five	9:00 AM Monday	minutes thereafter
	Round Six	2:00 PM Monday	



## ENTRY FEES



**Note:** Registering players on the first day of the tournament is time consuming and often results in delaying the start of the tournament, therefore, please register by mail using the form below (you save \$5 by doing so).

**Mail:** If mailed by May 24, the entry fee for the Open division is \$35; for the A division is \$30; for the B division is \$25; for C, D, E, and Unrated division is \$20.

**Late:** If paid Saturday morning, all entry fees will be \$5 more.

**SNACK BAR** Food and refreshments available at the LERA snack bar.

**NEXT EVENT** The next LERA chess tournament will be held the weekend of September 24 and 25, 1983.

All players must be USCF and CalChess members or become members at the tournament.

5-83

NAME \_\_\_\_\_ PHONE \_\_\_\_\_ USCF RATING \_\_\_\_\_

STREET \_\_\_\_\_ CITY \_\_\_\_\_ ZIP \_\_\_\_\_

Name and date of the last tournament you played in: \_\_\_\_\_

USCF Identity No. \_\_\_\_\_ Exp. Date \_\_\_\_\_ USCF dues: \$16 adult and \$8 under 18.

CalChess Exp. Date \_\_\_\_\_ CalChess dues: \$8 adult, \$4 under 18, and \$2 under 16 and no magazine.

Entry Fee:\* Open division is \$35, A division is \$30, B division is \$25, and C, D, E, or UNR division is \$20.

\*If mailed by May 24, otherwise entry fees are \$5 more. Make check payable to LERA Chess Club.

MAIL TO: Jim Hurt, LERA Chess Club, P.O. Box 60451, Sunnyvale, CA 94088. \_\_\_\_\_

(408) 742-4329 Amount of Check \_\_\_\_\_